



INSTALLATION GUIDE

NOVANO 6" LUSSO PROFILE



1. Introduction

Sec.1 Basics

Sec.2 Scope of Delivery

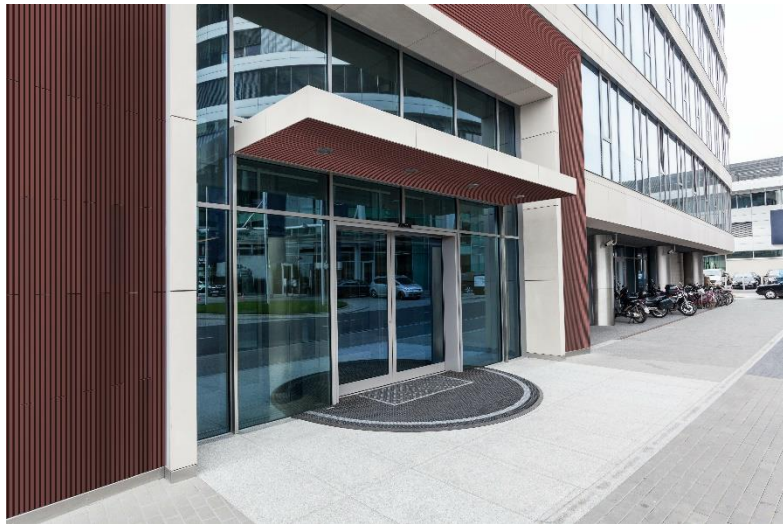
2. Installation

Sec.1 Procedures

Sec.2 Termination on
Perpendicular Wall

Sec.3 Termination on End
Profile

Sec.4 Finishing Corner
Details



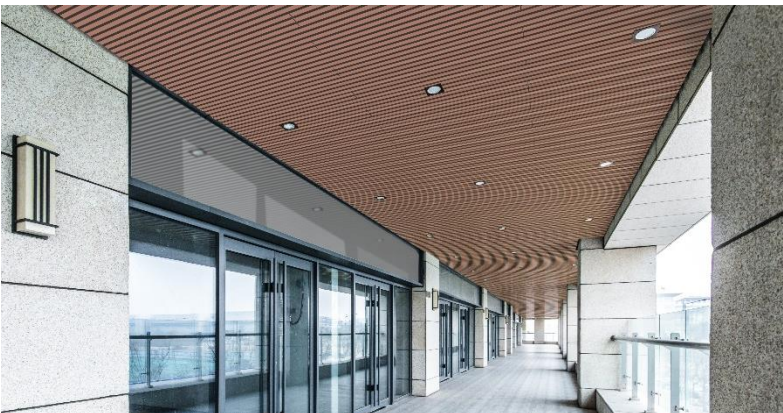
3. General Advice

Sec.1 Wall higher than
2900mm long

Sec.2 Expansion Joint

Sec.3 General Notes

Sec.4 Disclaimer

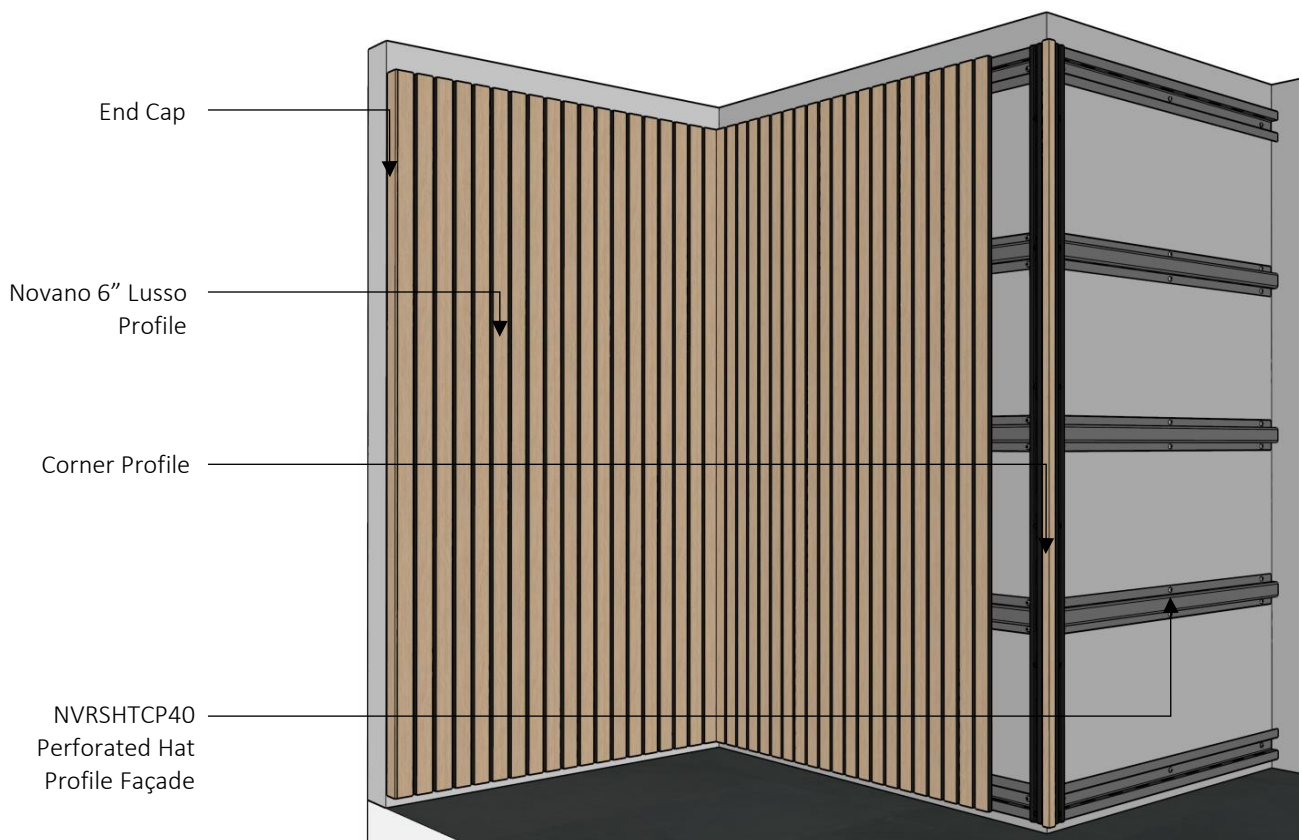


1. INTRODUCTION

NOVANO is an innovative replacement that represents a real game changer in sustainable house construction. The name NOVANO is made up of the words "Nova Ligno", which means something like "New Wood". It is a natural fiber that can also be recycled as a material. It is astonishingly similar to its original, but thankfully does not turn gray over time. Thanks to this new type of product, it is now possible to feel the warmth, homeliness and security that wood conveys without needing it in its natural form. This was and is the quintessential production of Novano.

SECTION 1 - Basics





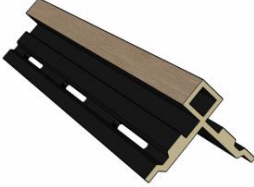
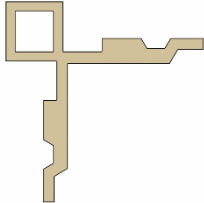
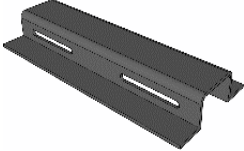

OVERVIEW OF PARTS



ISOMETRIC VIEW

BASIC PARTS OF NOVANO 6" LUSSO PROFILE

SECTION 2 - Scope of Delivery

NO.	PRODUCT NAME AND SPECIFICATION	ISOMETRIC VIEW	FRONT VIEW
1	NVLPH1452029C00 145mm x 20mm x 2900mm Novano 6" Lusso Hollow Profile Uncoated		
2	NVLPH1452029CXX 145mm x 20mm x 2900mm Novano 6" Lusso Hollow Profile Coated		
3	Corner Profile		
4	NVRSHTCP40 A=18mm W=38mm L=4m Perforated Hat Profile Facade		

NOTE:

Table above shows products commonly used for Novano 6" Lusso Profile. To view a complete list of products, please refer to our Novano brochure or visit our web site <https://www.novano-resysta.de/>

2. INSTALLATION

SECTION 1 – PROCEDURES

STEP 1

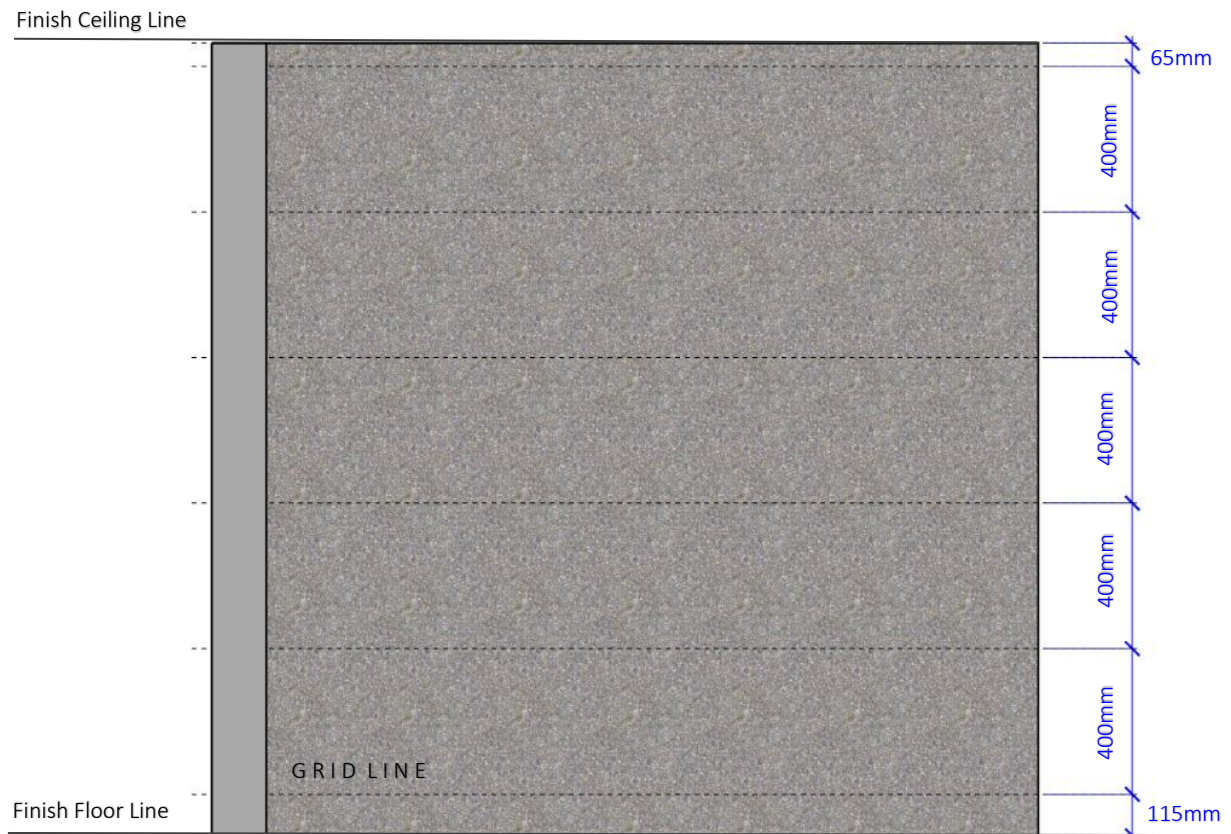
Check the layout and designed direction of the Novano 6" Lusso profile panel to be installed. Also check the layout for existing plumbing and electrical wiring to make sure that there is not any interference.

STEP 2

Check the surface wall level to be 100% levelled before installing the aluminium perforated hat profile facade NVRSHTCP40.

STEP 3

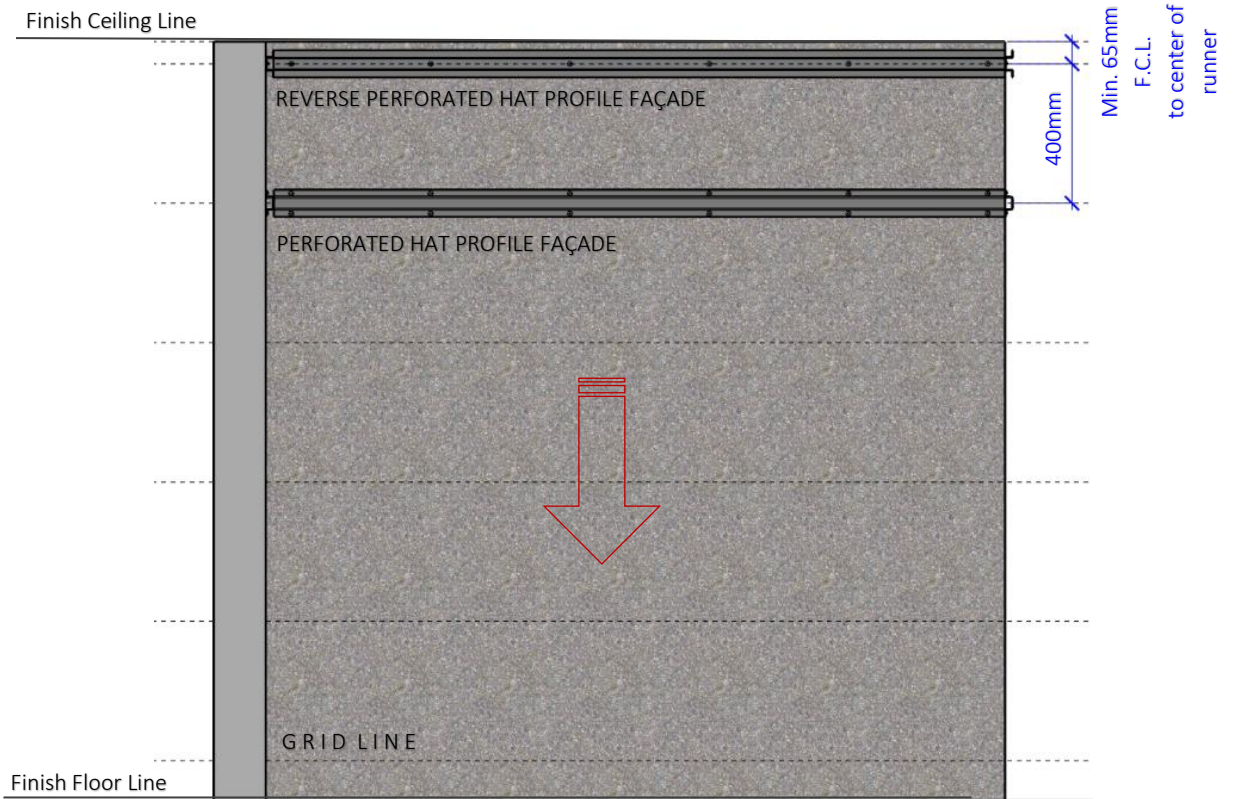
Establish gridline for the aluminium perforated hat profile façade NVRSHTCP40, minimum of 65mm from finish ceiling line to center of first perforated hat profile façade and followed by minimum 400mm spacing center to center perforated hat profile façade. The perforated hat profile façade needs to have a maximum 115mm from finish floor line to center of hat channel.



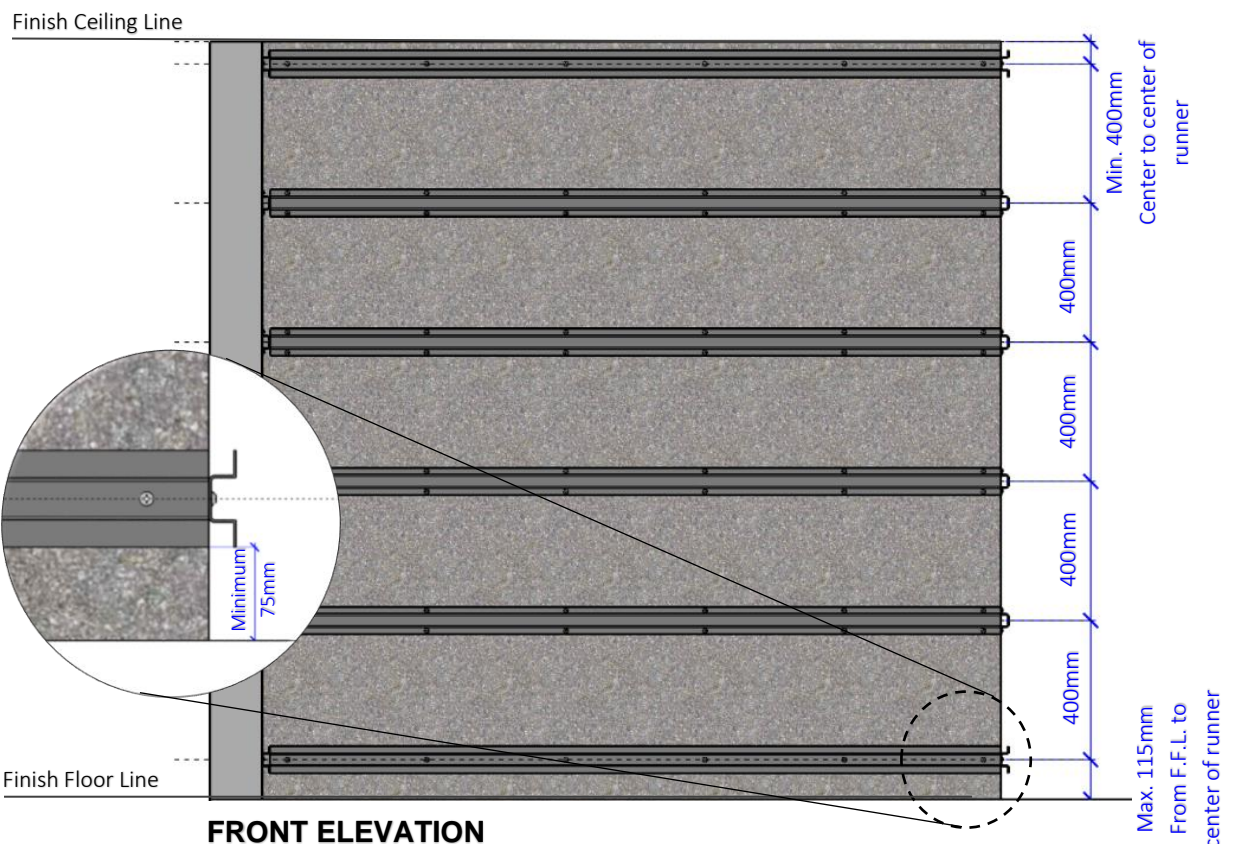
FRONT ELEVATION
NOVANO VERTICAL PANEL

STEP 4

Install the first horizontal aluminium perforated hat profile façade NVRSHTCP40 on a reverse orientation starting from the finish ceiling line to the center of perforated hat profile façade with a minimum 65mm and followed by minimum of 400mm center to center. Note that the last perforated hat profile façade needs to have a maximum 115mm from finish floor line to center of hat channel.



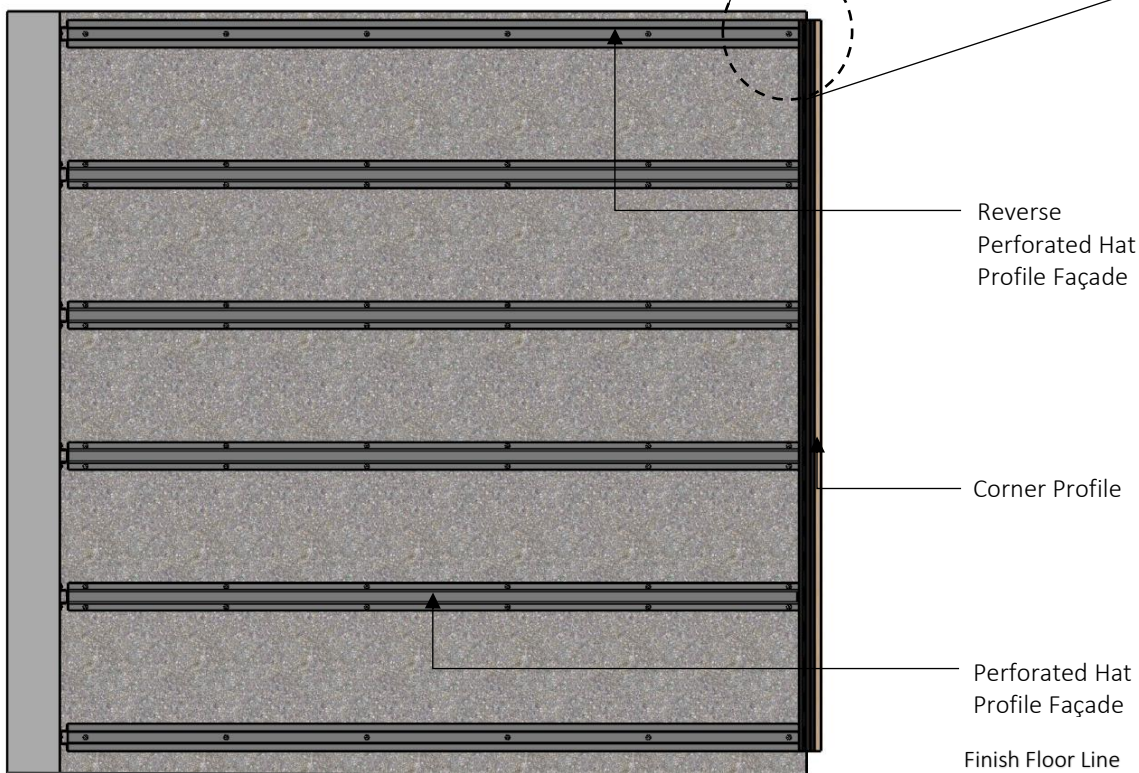
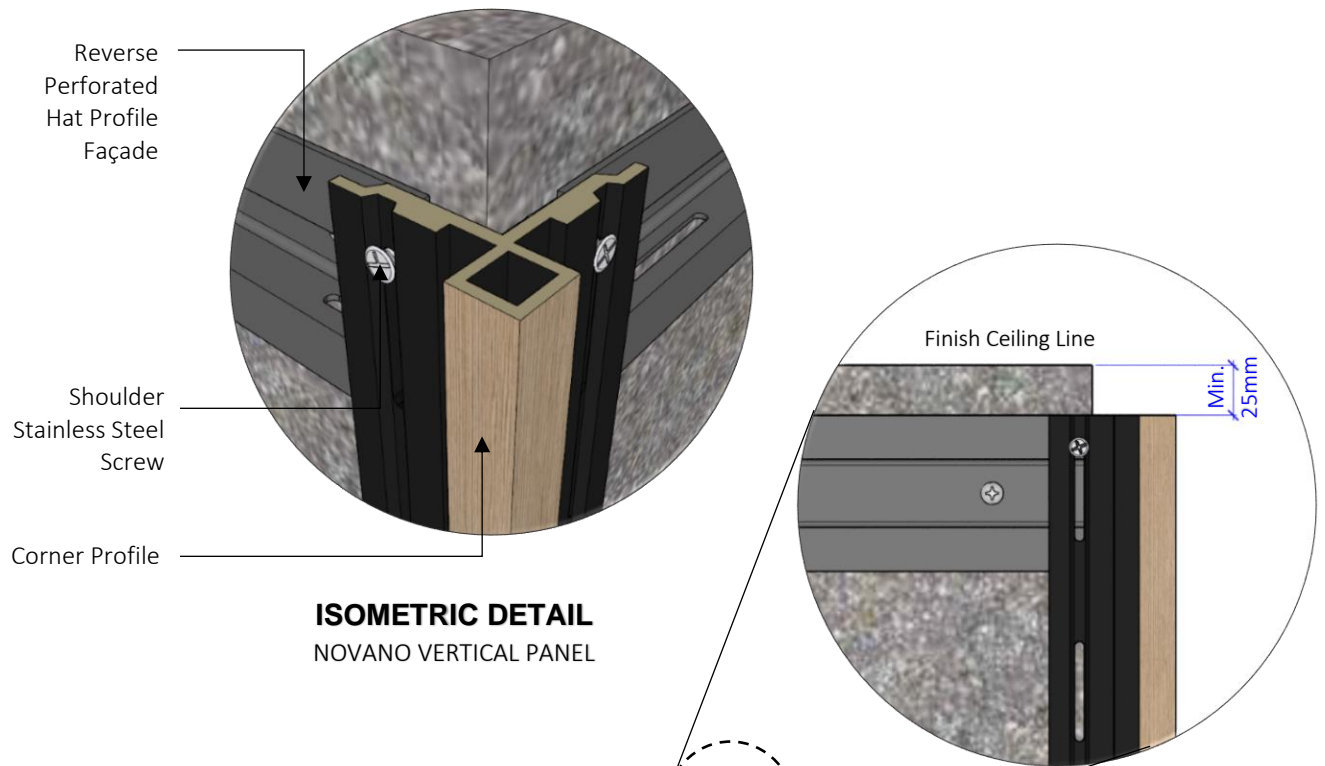
FRONT ELEVATION
NOVANO VERTICAL PANEL



FRONT ELEVATION
NOVANO VERTICAL PANEL

STEP 5

Screw the corner profile directly into the aluminium perforated hat profile façade NVRSHTCP40 using shoulder stainless steel screw and make sure that the corner is plumb.

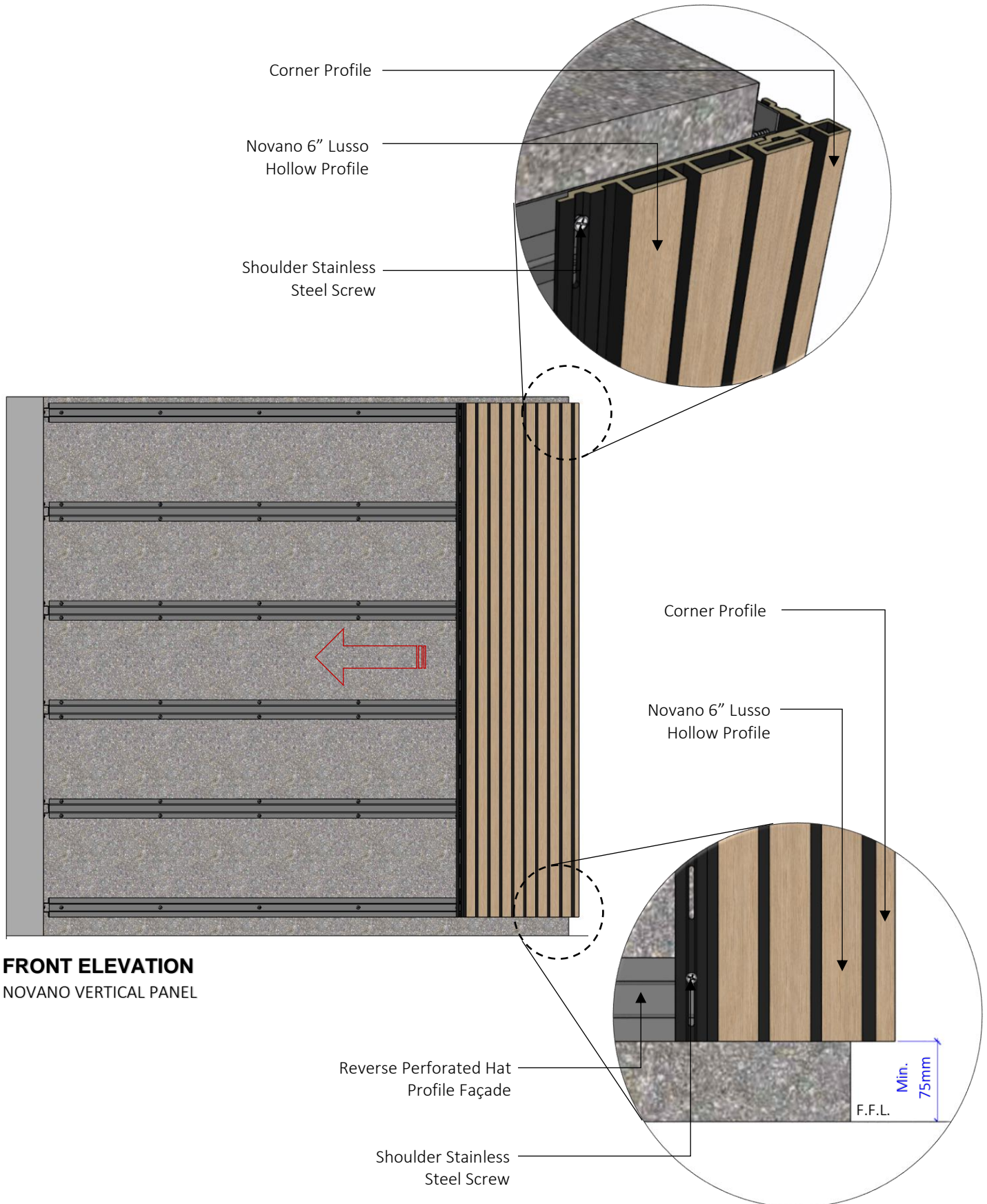


FRONT ELEVATION

NOVANO VERTICAL PANEL

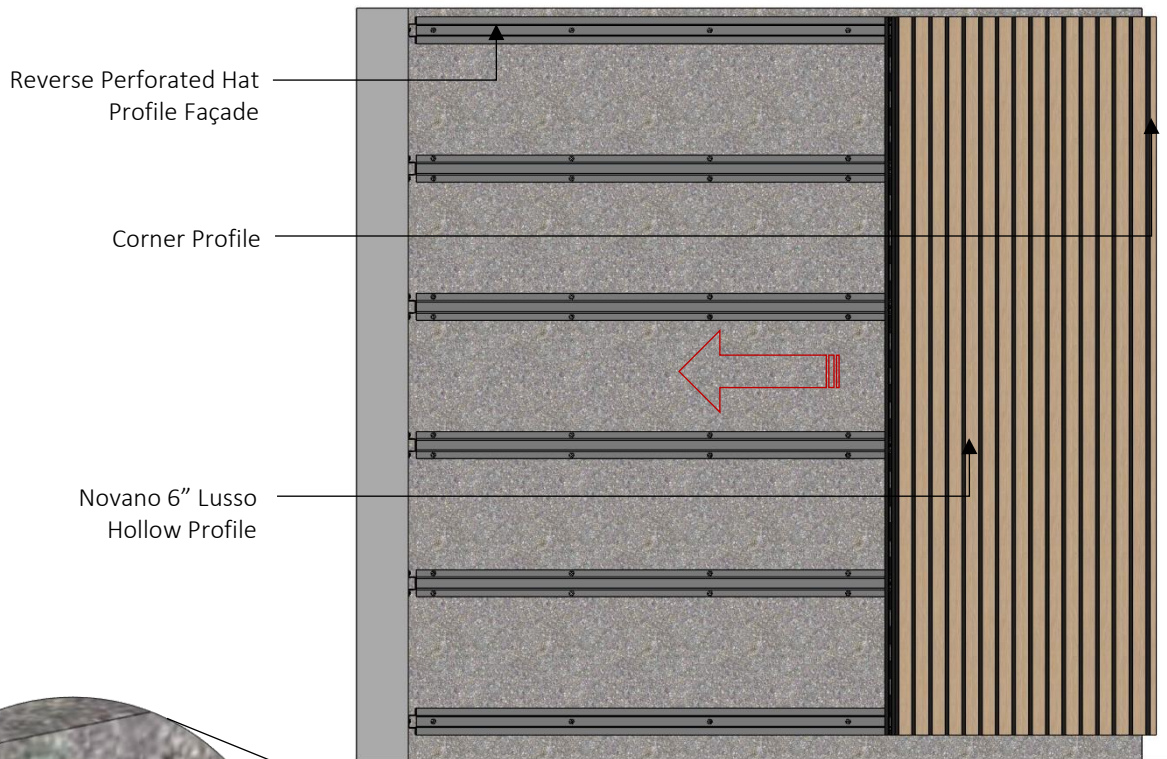
STEP 6

Slide and screw in the first Novano 6" Lusso profile panel aligned into the aluminium perforated hat profile façade and make sure that the corner is plumb.

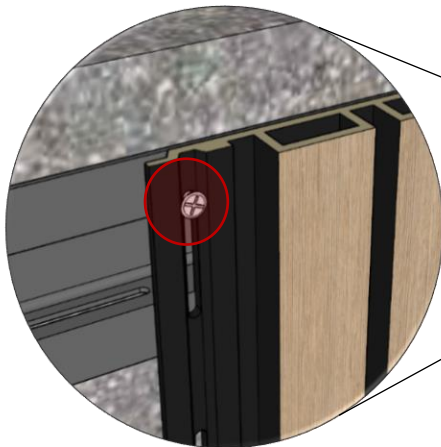


STEP 7

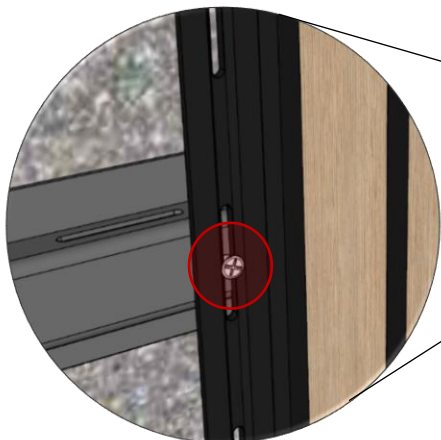
Repeat vertically the installation of the Novano 6" Lusso profile panel direct into the aluminium perforated hat profile façade until reaching the end of the wall and make sure that the corner is plumb.



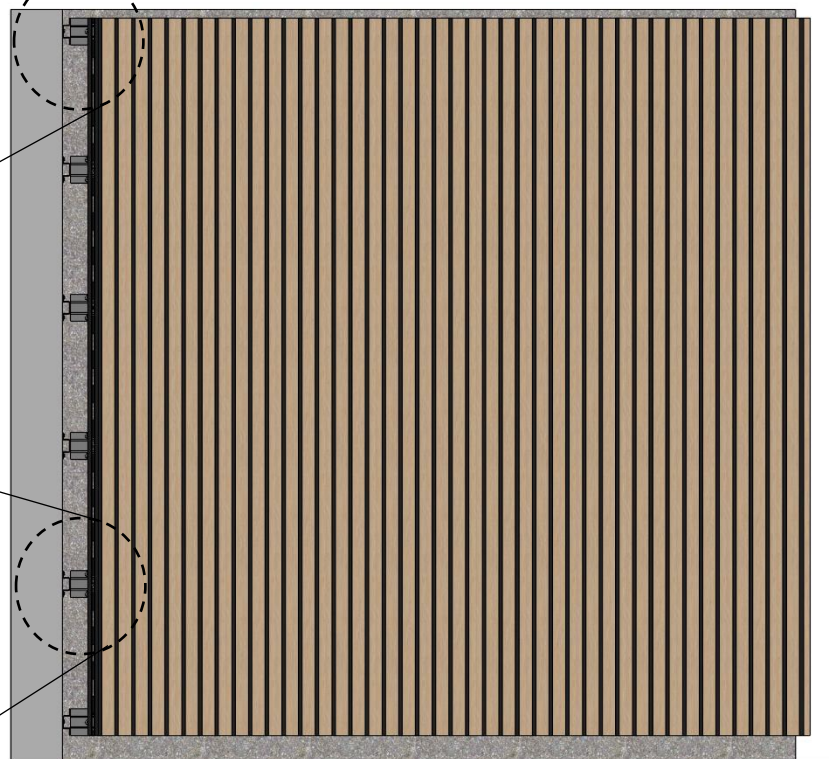
FRONT ELEVATION
NOVANO VERTICAL PANEL



Hard fasten first screw on top part of the hole.



Loose for the rest of the screw placed it on the centre of the hole to allow movement.



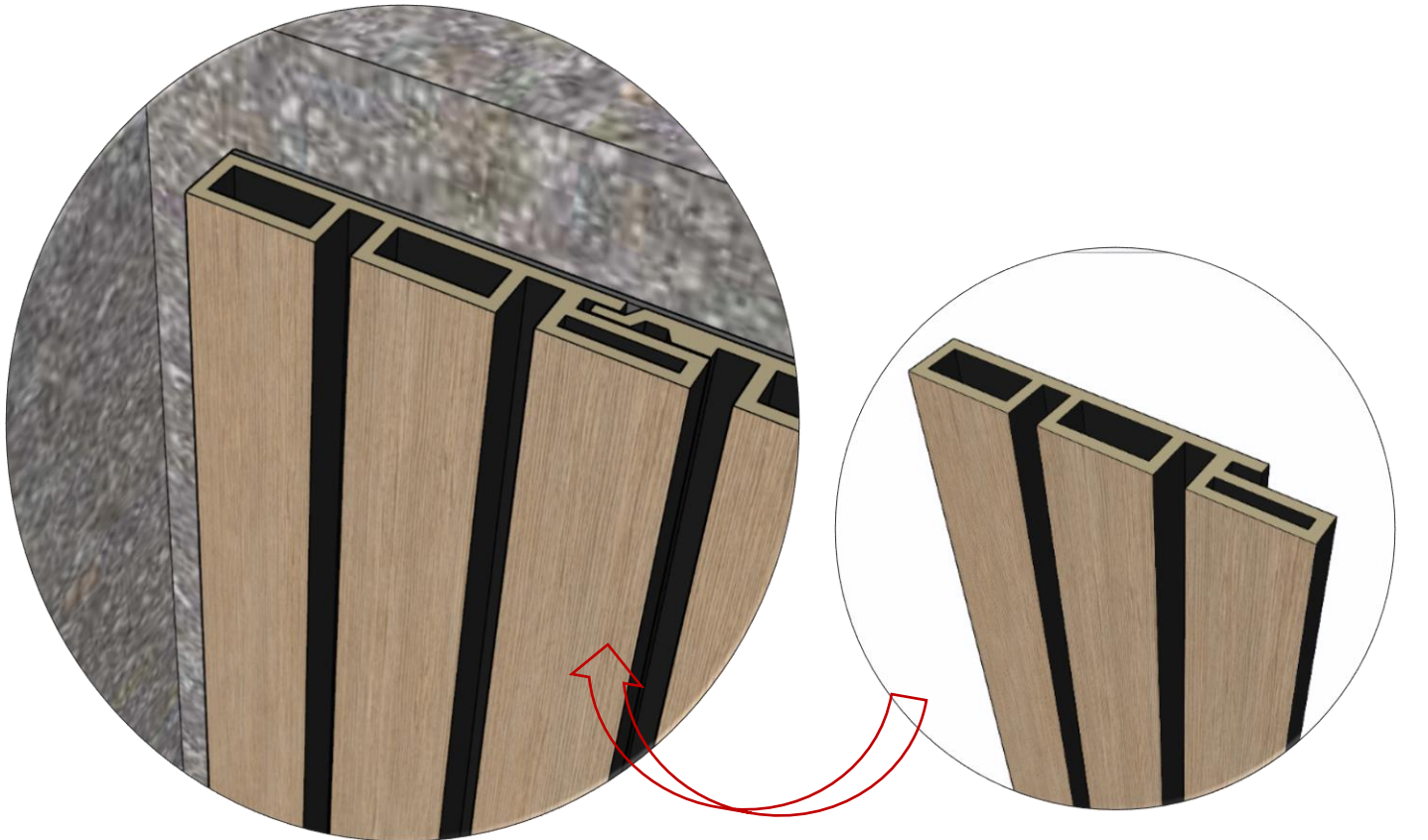
FRONT ELEVATION
NOVANO VERTICAL PANEL

STEP 8

The last panel needs to be cut and glued to the previous panel tongue using PL Premium adhesive.

SECTION 2 – Termination on Perpendicular Wall

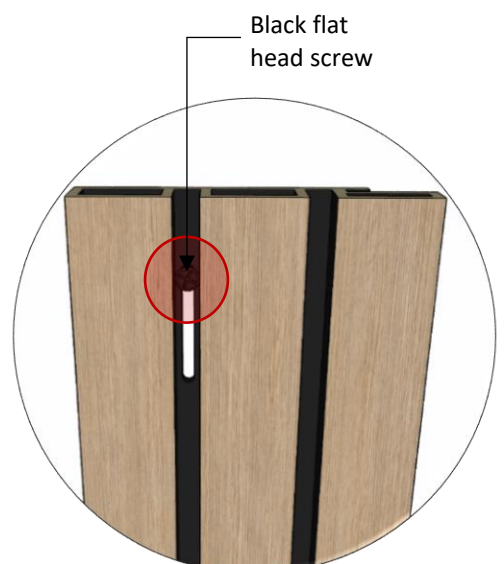
OPTION 01 Cutting the male part NOVANO 6" LUSSO PROFILE (PANEL ENDING PERPENDICULAR INTO A WALL)



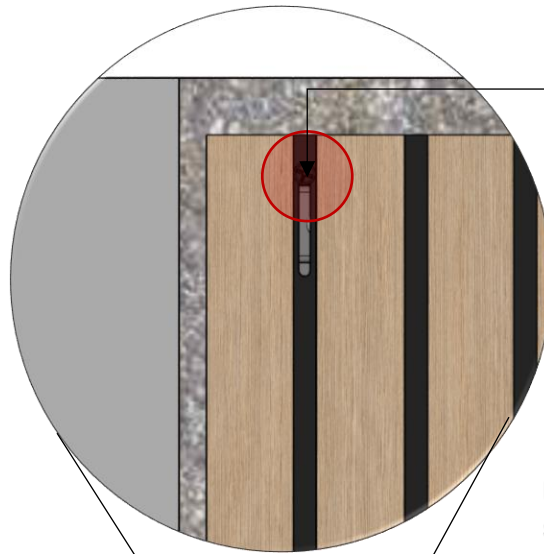
1-Novano 6" Lusso
Hollow Profile



2-Cut the male part of
the board.

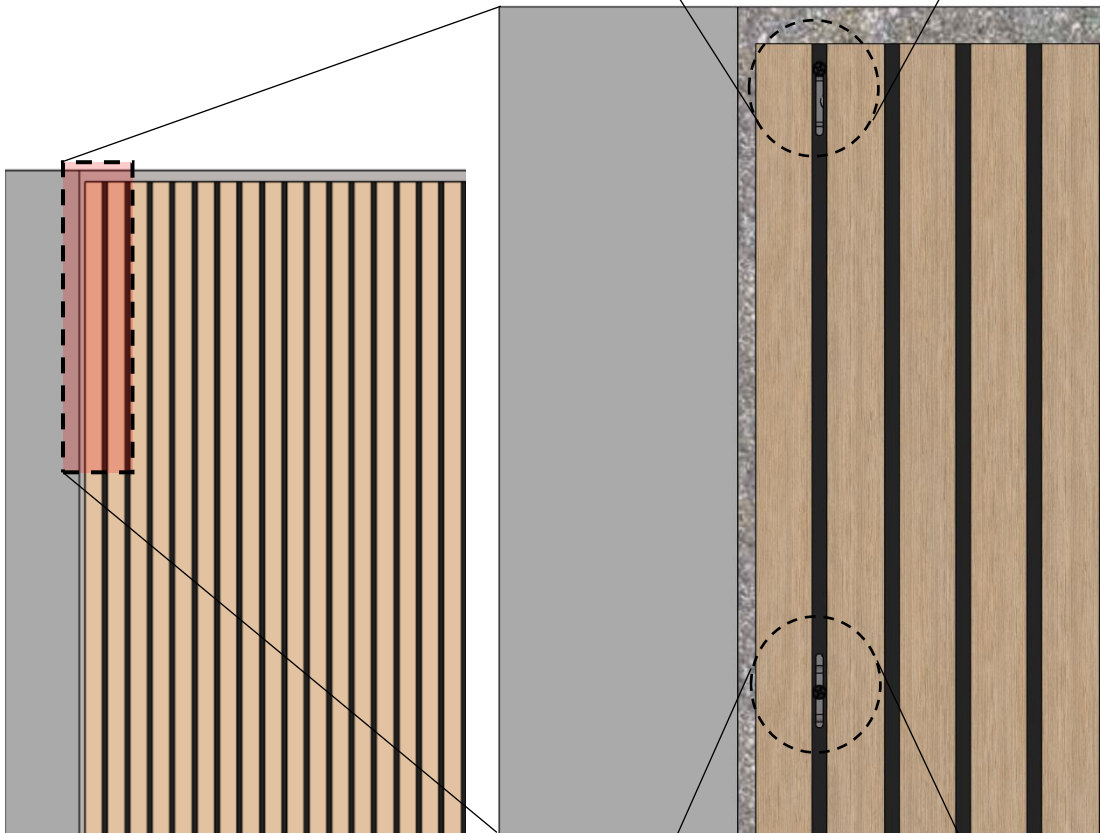


3-Use a Router or similar to provide an
50mm x 13mm hole in the board at every
runner location for the screw.

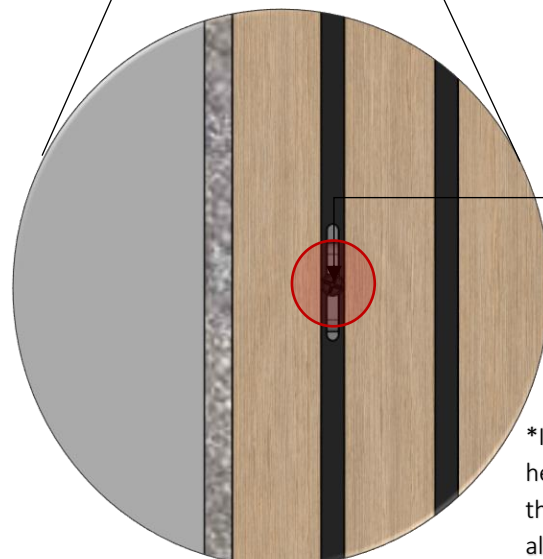


Tighten the Black flat head screw

*Tighten the first black flat head screw used as face screw on top part of the hole.



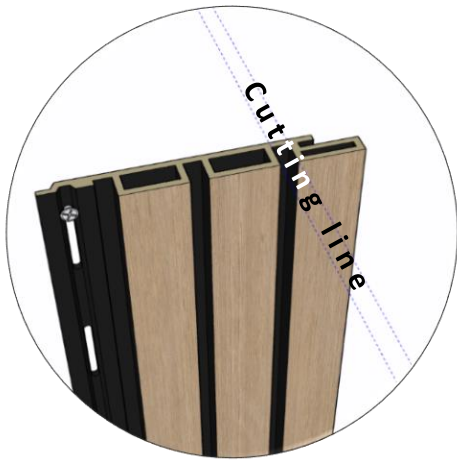
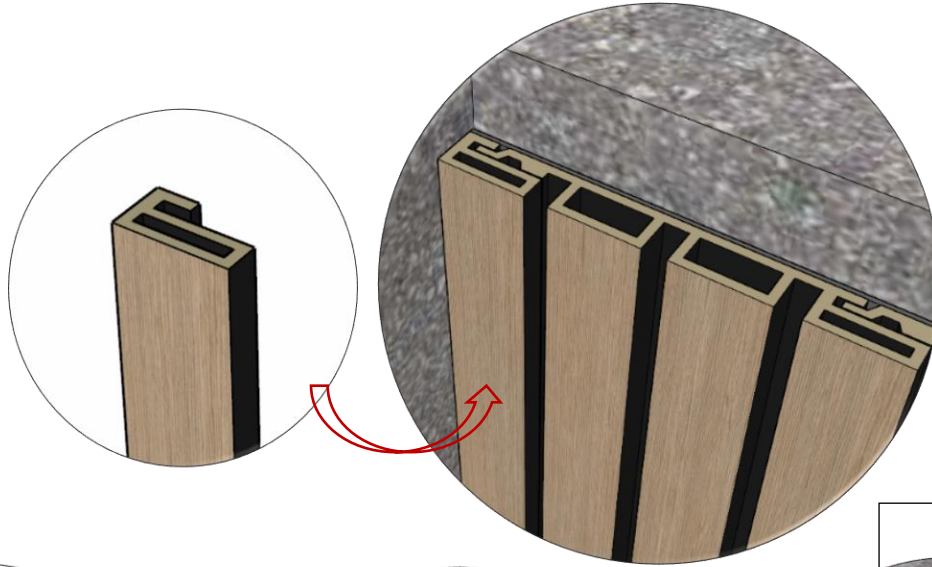
FRONT ELEVATION
NOVANO VERTICAL PANEL



Slightly loose Black flat head screw

*Install remaining black flat head screws in the center of the hole and slightly loose to allow movement.

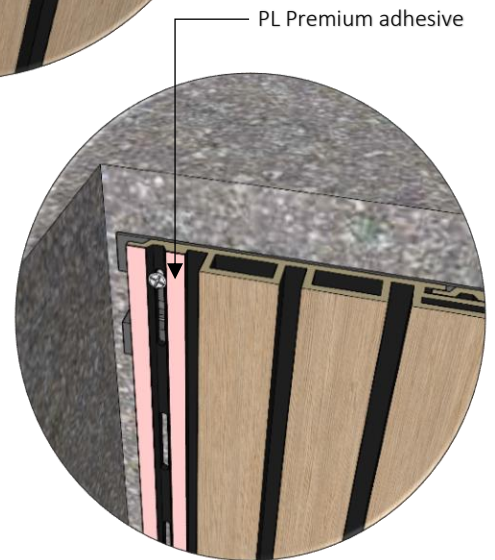
OPTION 02 Cutting the female part NOVANO 6" LUSSO PROFILE
(PANEL ENDING PERPENDICULAR INTO A WALL)



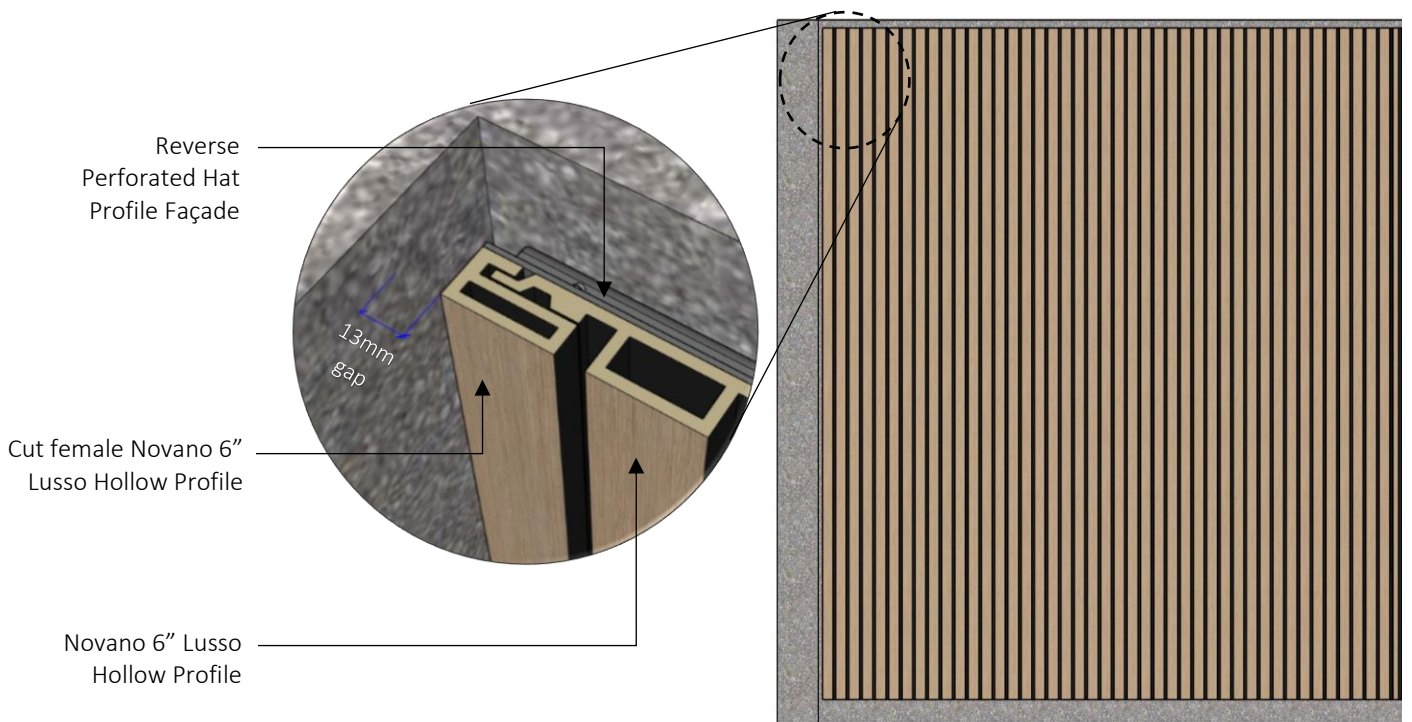
1-Novano 6" Lusso Hollow Profile



2-Cut the female part of the board.



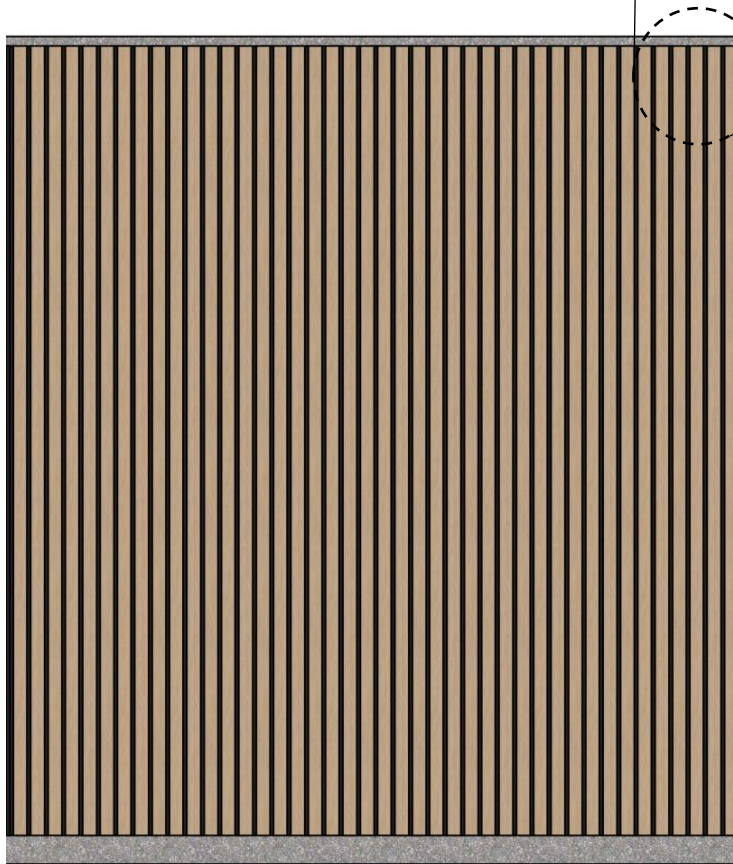
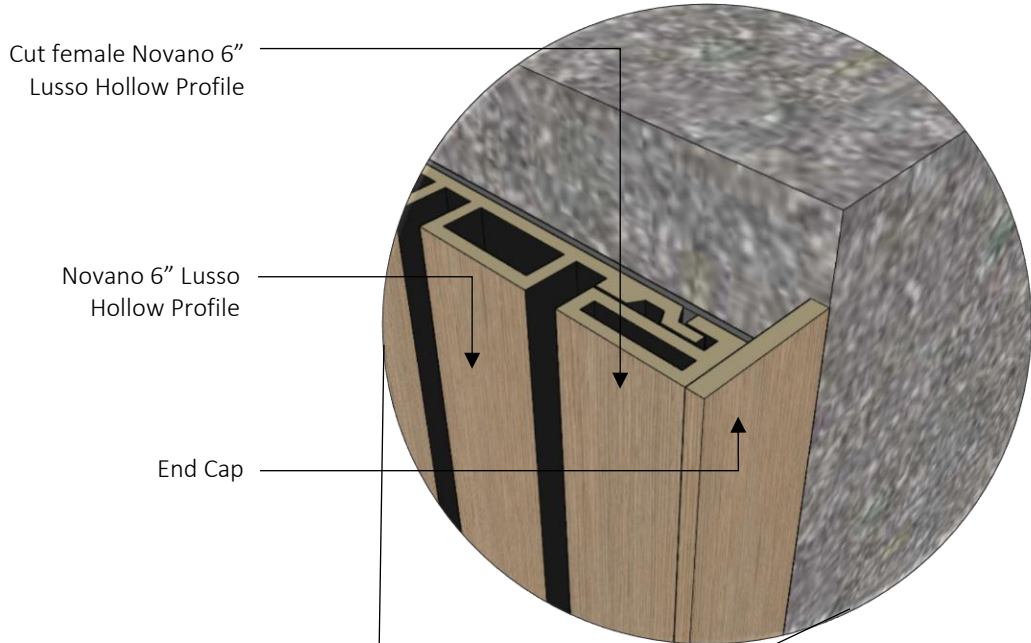
3-Apply PL Premium adhesive on this area to hold the cut female board.



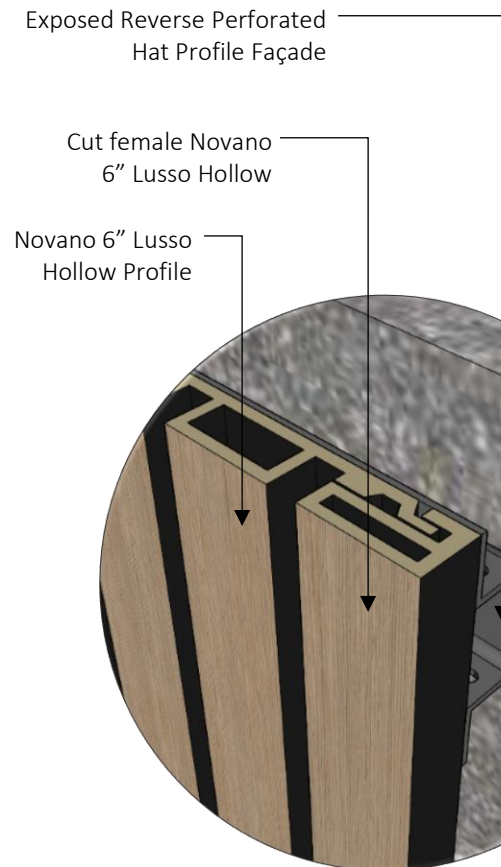
FRONT ELEVATION
NOVANO VERTICAL PANEL

SECTION 3 – Termination on End Profile

To hide the exposed perforated hat profile facade, glue together the cut Novano 6" Lusso profile panel and End Cap to the previous panel tongue using PL Premium adhesive.

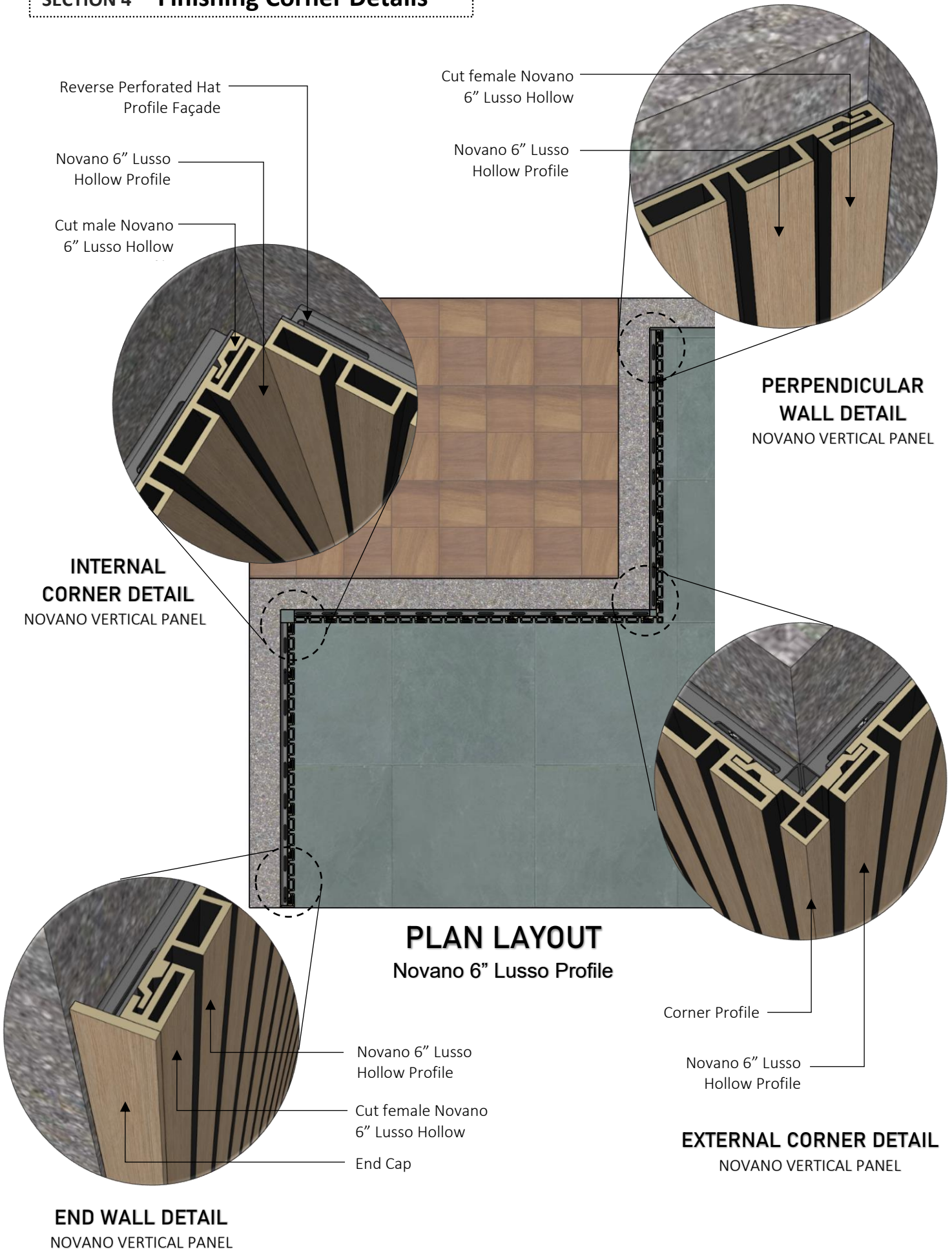


FRONT ELEVATION
NOVANO VERTICAL PANEL



END WALL DETAIL
NOVANO VERTICAL PANEL

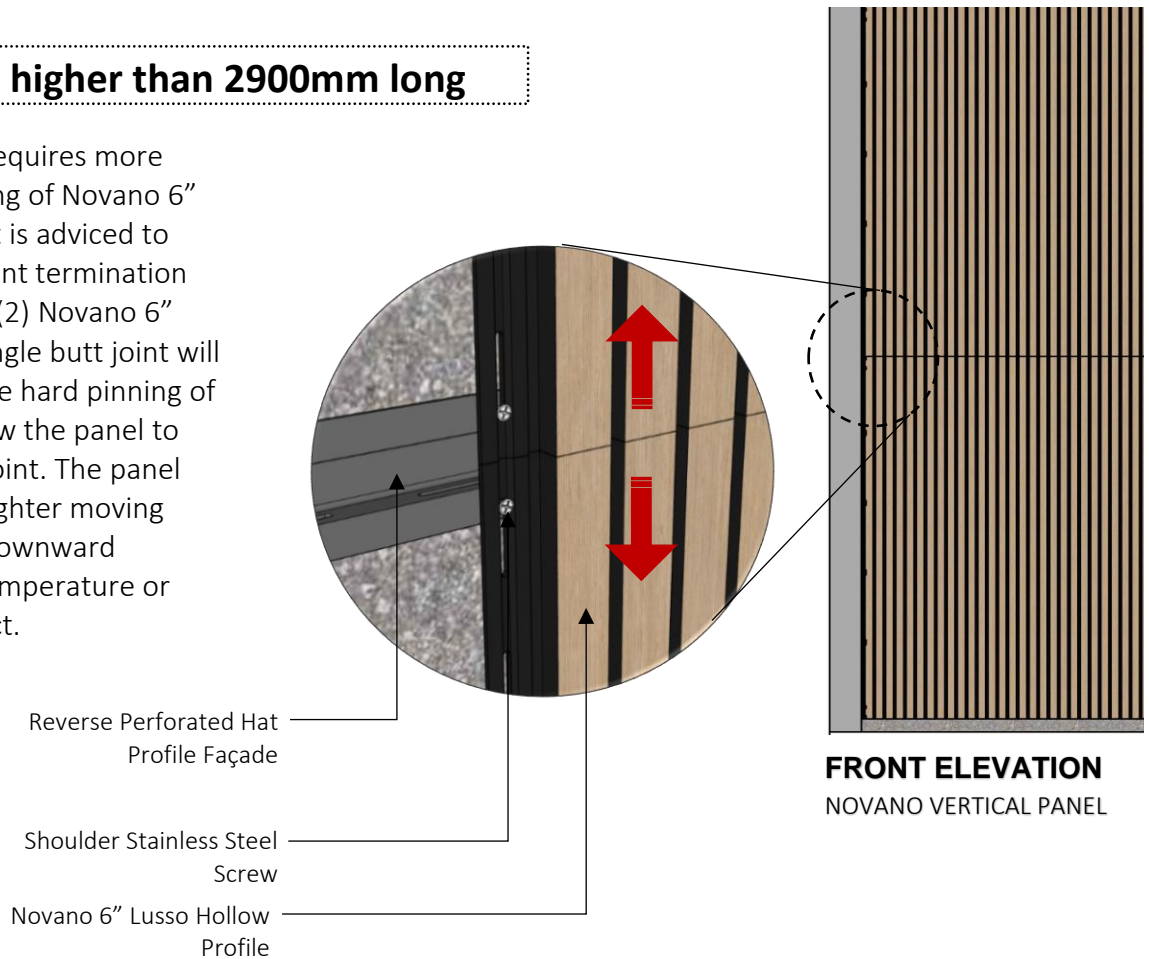
SECTION 4 – Finishing Corner Details



3. GENERAL ADVICE

SECTION 1 - Walls higher than 2900mm long

In case the project requires more than 3657.60mm long of Novano 6" Lusso profile panel it is advised to have a single butt joint termination for every set of two (2) Novano 6" Lusso Profile. The single butt joint will be the location of the hard pinning of the panel, it will allow the panel to have an expansion joint. The panel can freely expand either moving upward or moving downward depending on the temperature or climate of the project.



SECTION 2 - Expansion Joint

Expansion joint caters for temperature- dependent linear expansion of 1.58mm gap per panel every 10 degrees in temperature change between the ends of the planks. e.g., 2895.6mm plank= approx. 3.18mm distance. If the planks are installed closed to a wall the distance here should be 12.70mm. (Refer to expansion chart).

Table 1.1

Surface Temperature	Gap (2895.6mm panel)	Gap (3657.6mm panel)	Ending
30°C- 40°C	1.58mm	3.18mm	12.70mm
15°C- 30°C	3.18mm	4.76mm	12.70mm
40°C- 60°C	1.58mm	1.58mm	12.70mm
60°C- 70°C	none	none	4.76mm

1. The Dimensional change of Novano is solely dependent on thermal expansion. Air, humidity, and water have no influence on dimensional change. Thermal expansion must be considered at installation.
2. Cutting to length should be carried out at consistent material temperature. Therefore, the materials should be stored in the shade or in areas where it is not exposed to direct sunlight. The material can

warm up considerably in the sun, leading to an increased change in length. In the case of more distinct fluctuations in material temperature, cutting to length may have to be adapted accordingly.

3. Novano has a high vapor diffusion resistance. Please consider installation.
4. Novano has a class A fire rating (ASTM-E84).
5. Cut-off pieces and/or abrasive dust have to be disposed of separately. Please comply with the regulations of your competent waste management. You may under no circumstances burn Novano yourself.

SECTION 3 - General Notes

1. Novano building products is not responsible for the information shown on all details beyond the specification scope of work BID/quoted and as indicated in contract documents.
2. Details of adjustment work are shown for completeness only. The project Architect / Project Engineer / Erecting Contractor supplying and/or installing the structural support is responsible for its design/installation to accommodate all loads imposed upon the products.
3. Our Engineer is limited to the load-carrying components of the panel system and its fasteners shown on the subsequent drawings. The components are supplied by other parties.
4. These drawings are the copyright property of Novano Building Products, Inc.
5. Please read our installation and design recommendation documents for further information that may be important for your specific project or installation.
6. Ensure a steady material temperature when cutting the boards to size. The cutting has to be done under constant conditions. e.g., inside or in shade.
7. Always consider the linear expansion of Novano, which is dependent on the temperature but not air humidity. See Table 1.1 for more information.
8. Minimum runner/batten spacing for the 200mm siding system.
9. Slots should be used to attach siding to runner/battens.
10. Overhang siding boards to a maximum of 25mm
11. Only use construction fastening material and hardware suitable for outdoor use (e.g., Stainless Steel Screws).

SECTION 4 - Disclaimer

Novano 6" Lusso profile panel has been specially developed for their named application and are not a structural material. The items have no general technical approval and are therefore not suitable for supportive construction purposes. Local building codes as well as installations and technical information should be considered. Novano products should be stored on a flat and level surface. If planks are stored on stickers/slats ensure that there is a distance of no more 300mm between them, the Novano cladding must be installed by an authorized professional installer.

For more details, please visit our web site <https://www.novano-resysta.de/>